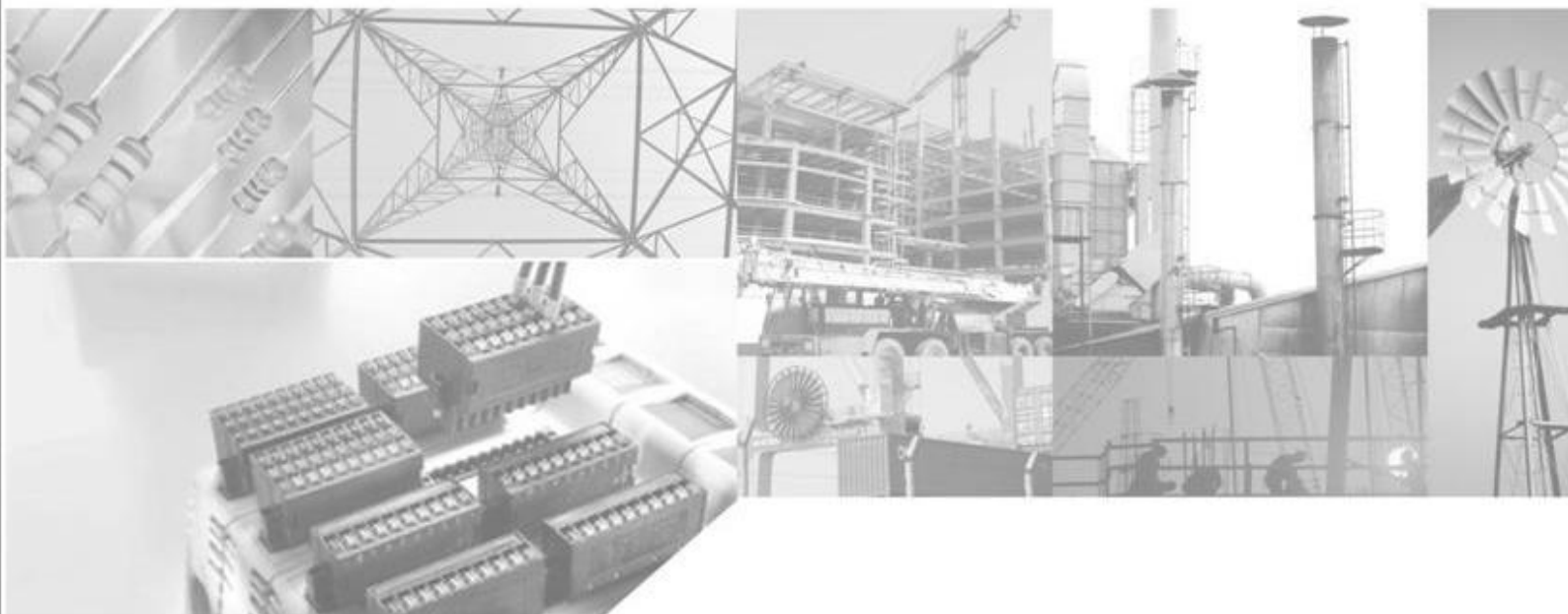


Neoway Technology Co., Ltd

Technical Document

Neo_WM620 Driver Installation Guide On WIN7 V1.0



有无线 方精彩
LET'S ENJOY WIRELESS LIFE

Copyright © Neoway Technology Co., Ltd 2014. All rights reserved.

No part of this document may be reproduced or transmitted in any form or by any means without prior written consent of Neoway Technology Co., Ltd.

Neoway[®] is the trademark of Neoway Technology Co., Ltd.

All other trademarks and trade names mentioned in this document are the property of their respective holders.

Notice

This document is intended for [system engineers \(SEs\)](#), [development engineers](#), and [test engineers](#).

The information in this document is subject to change without notice due to product version update or other reasons.

Every effort has been made in preparation of this document to ensure accuracy of the contents, but all statements, information, and recommendations in this document do not constitute a warranty of any kind, express or implied.

Neoway provides customers complete technical support. If you have any question, please contact your account manager or email to the following email addresses:

Sales@neoway.com.cn

Support@neoway.com.cn

Website: <http://www.neoway.com.cn>

1 Switching to Test Mode

Step 1 Click Start and choose **All Programs > Accessories > Command Prompt > Run as Administrator**.

Step 2 Enter `bcdedit /set testsigning on` in the CLI.

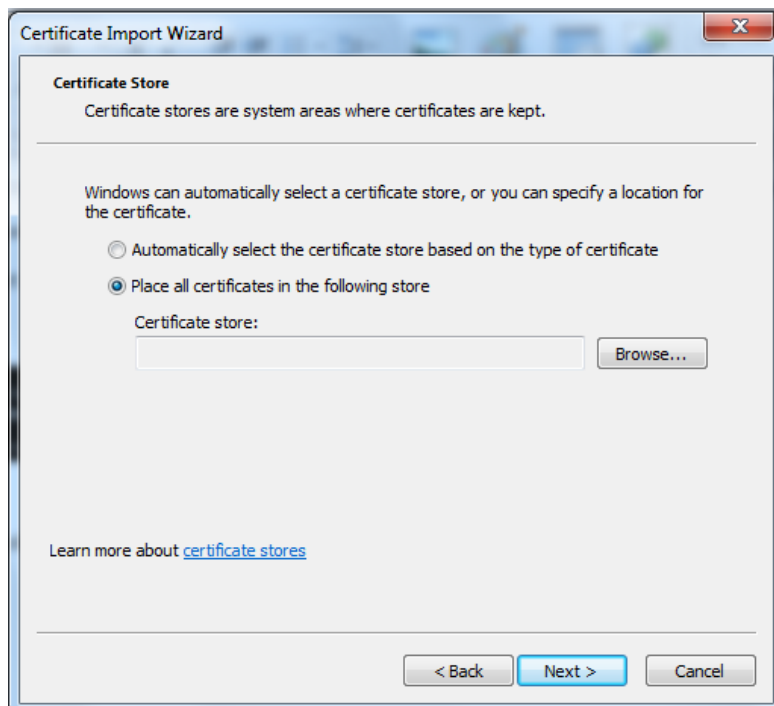
```
C:\Windows\system32>bcdedit /set testsigning on
The operation completed successfully.
C:\Windows\system32>_
```

2 Installing Certificate

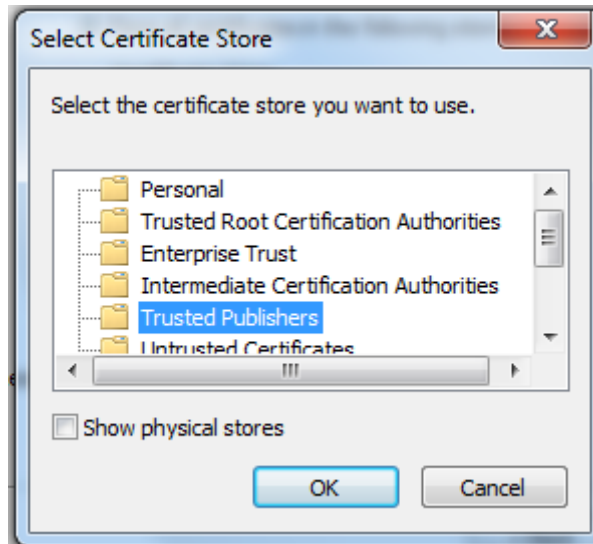
Step 1 Access the `HK11-VB717-34_1.0.69\TestCertificate\` directory.

Step 2 Right-click the `qcusbtest.cer` file and choose **install certificate** from the shortcut menu.

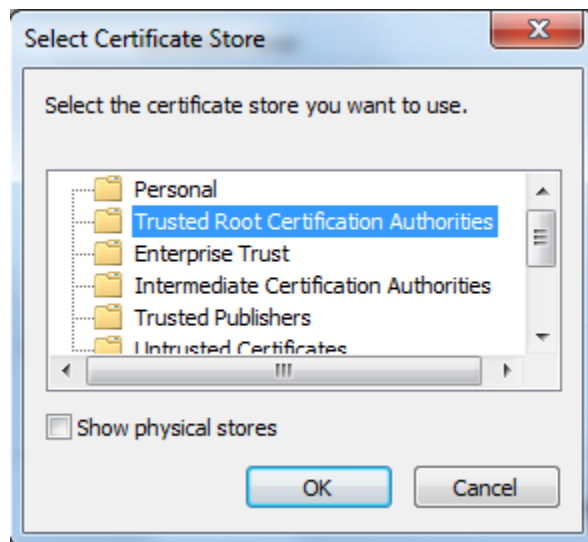
Step 3 In the Wizard dialog box, click **Next** and click **Place all certificates in the following store** on the **Certificate Store** page.



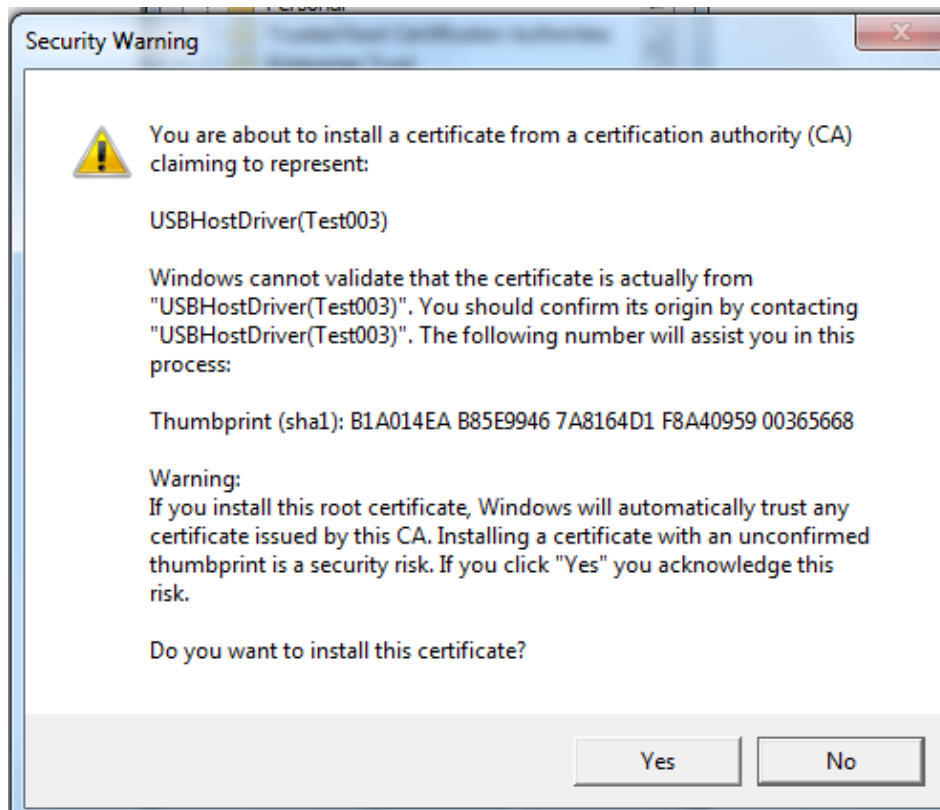
Step 4 Click **Browse** and choose the **Trusted Publishers** folder.



Step 5 Repeat step1 to step 4 and choose the **Trusted Root Certification Authorities** folder.



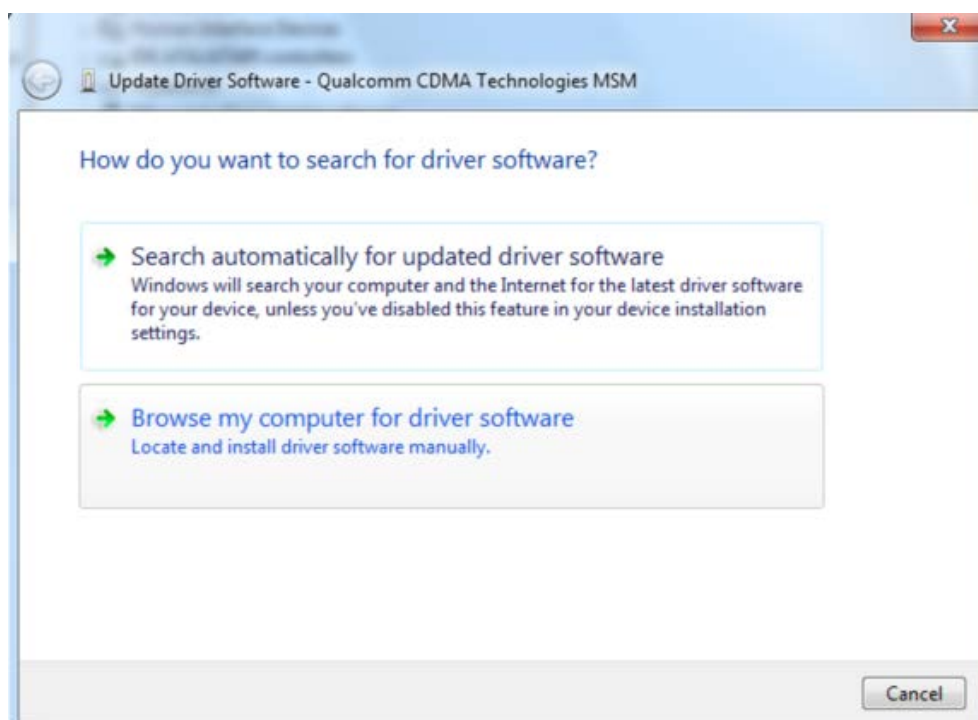
Step 6 Click **Next** to install. In the **Security Warning** dialog box, click **Yes**. The certificate will be installed.



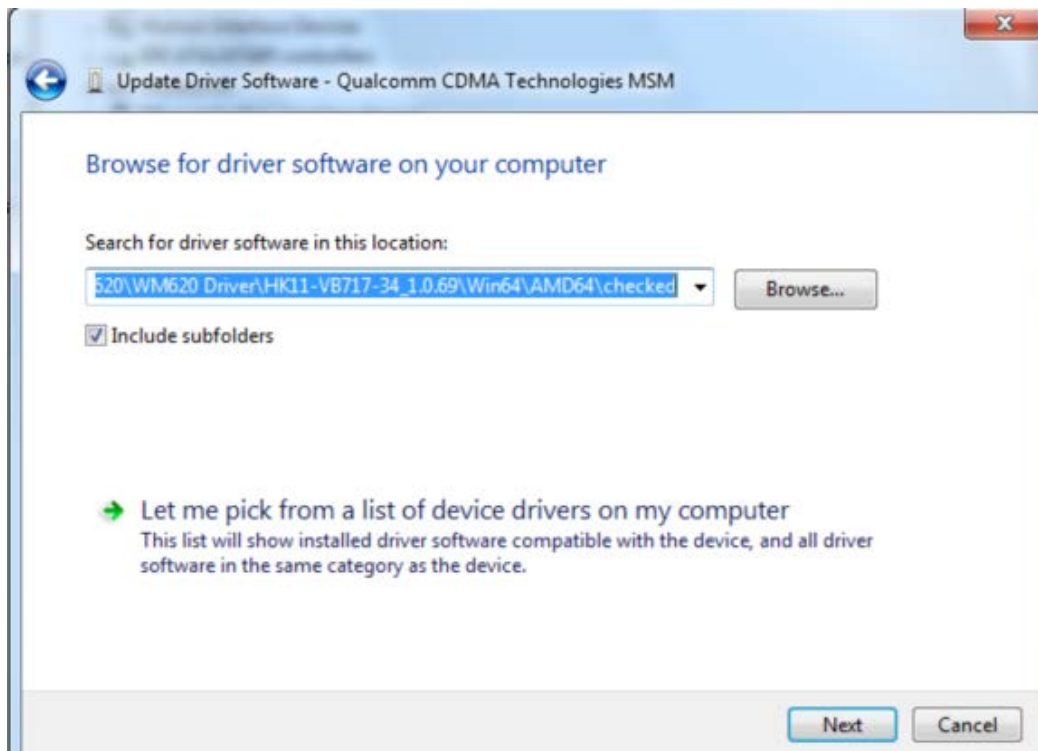
3 Installing Drivers

Step 1 Right-click **My Computer** on the desktop and choose **Manage** from the shortcut menu.

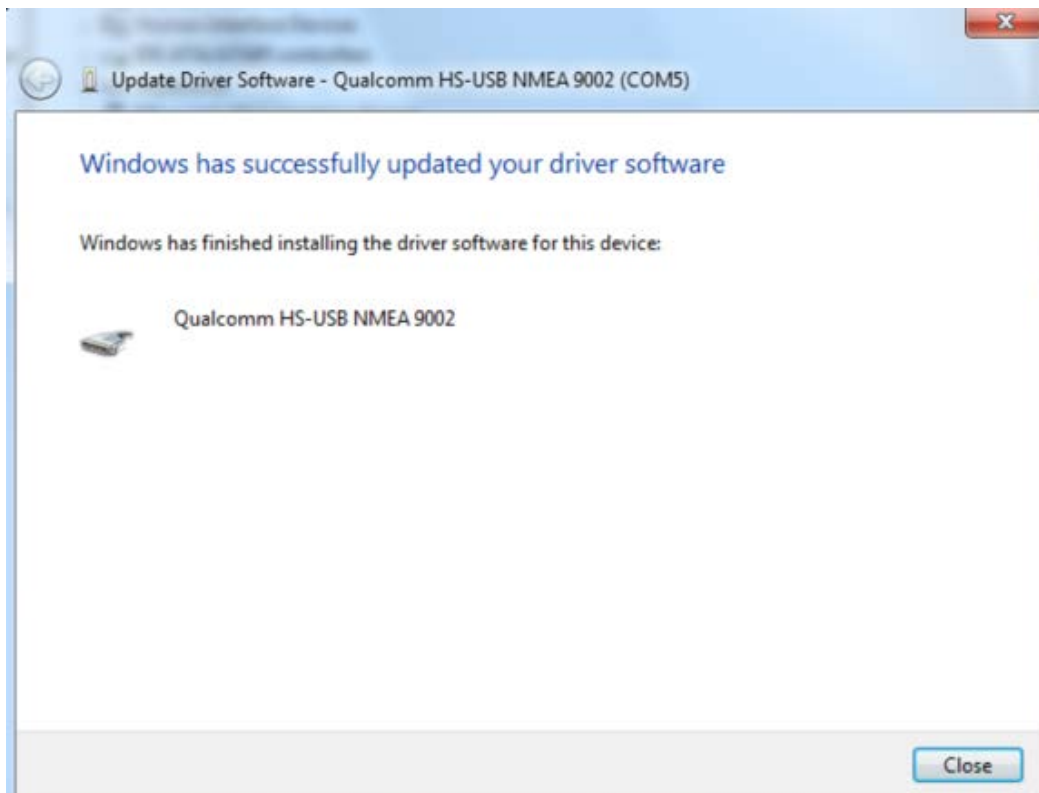
Step 2 In the window that is displayed, select **Device Manager** on the left navigation tree and choose **Other Devices** > **Update Driver Software** in the right pane.



Step 3 In the update window, click **Browse** to choose the local driver file **HK11-VB717-34_1.0.69\Win64\AMD64\checked** and click **Next**.



The following window will be displayed after the driver is installed successfully.



The ports are displayed in at device manager after the installation.

