

4G LTE Ultra-wide Bandwidth Antenna of Flex, IPEX Connector

Part No:AC-Q7027N23

1. Introduction

All band frequency from 800-2700MHz。 Includes all cellular, wi-fi, ISM and GNSS bands

Antenna is flexible and robust.

Its slim-line design allows for covert and convenient installation in the device, its omni-directional gain across all bands ensures constant reception and transmission.

It is a high gain, high efficiency solution which Built-in grounding, no need to add grounding antenna cables and connectors are fully customizable.



2. Specification

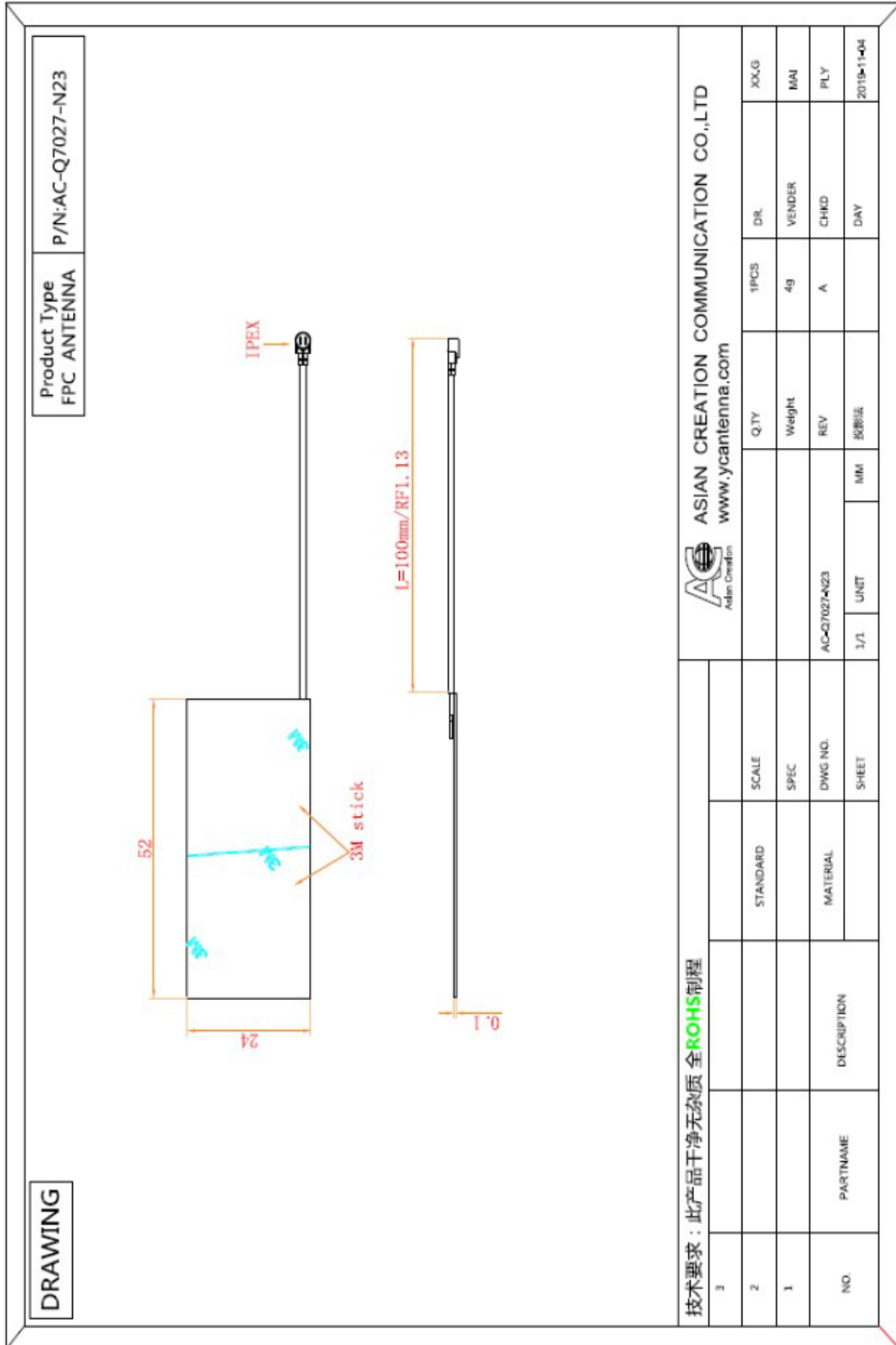
Electrical

fully customizable.	824-960/1710-2700MHz
Gain	2.5/3dBi
V.S.W.R	≤2.5
Maximum Input Power	50W
Impedance	50Ω
Connector	IPEX
Cable Type	1.13cable
Cable Length	10cm
Antenna Radome Material	FPC

Mechanical

Dimensions	52x24x0.1mm
Weight	8g
Operating Temperature	-40°C to+70°C
Humidity	+15-70%RH
RoHS Compliant	YES

3.Drawing



4.V.S.W.R

