



Tekfun Co., Ltd.

SPECIFICATION FOR APPROVAL

CUSTOMER _____

DESCRIPTION WALL MOUNT ANTENNA 900/1800/2100 MHz

PART NO. SW-32F

DATE _____

DESIGNER		DIRECTOR	
-----------------	--	-----------------	--

Approved by Customer/date:





Tekfun Co., Ltd.

ANTENNA SPECIFICATIONS FOR APPROVAL

1 GENERAL DESCRIPTION

- 1.1 Type No. : SW-32F
 1.2 Customer P/N :

2 DESCRIPTION & APPLICATION

This antenna assembly is designed for use in 900/1800/2100 MHz Wall Mount antennas.

3 ELECTRICAL CHARACTERISTICS

- 3.1 Frequency Range : 900/1800/2100 MHz
 3.2 V.S.W.R : ≤ 2.5
 3.3 Connector : SMA Male or FME F (optional)
 3.4 Impedance : 50 Ω
 3.5 Gain : 5dBi
 3.6 Cable : RG58 -5 meter

4 ENVIRONMENTAL CHARACTERISTICS

- 4.1 Operating temperature range -40°C to + 80°C

5 QUALIFICATION TESTING

- 5.1 All products shall be able to withstand the following testing.
 5.2 Physical dimensions identified within this specification.

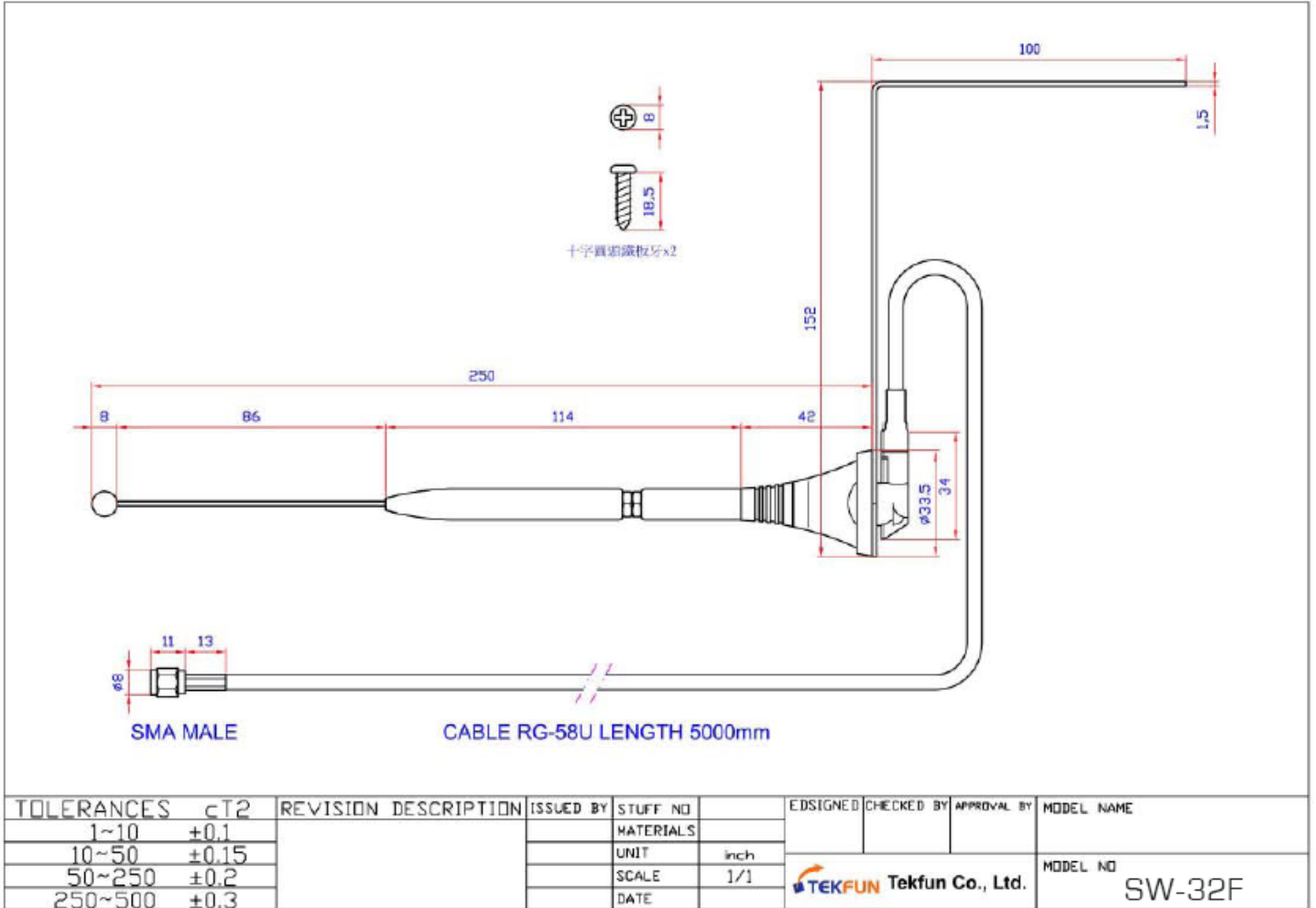
6 PACKING STYLE

- 6.1 Packing: Poly Bag.



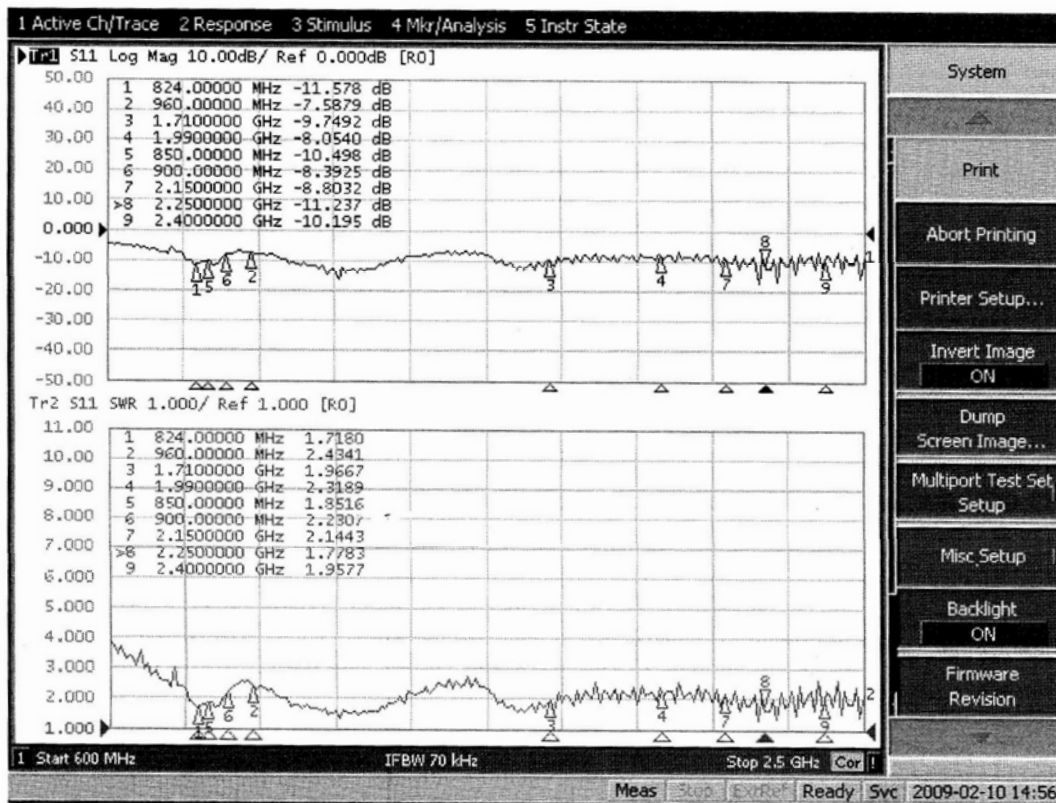
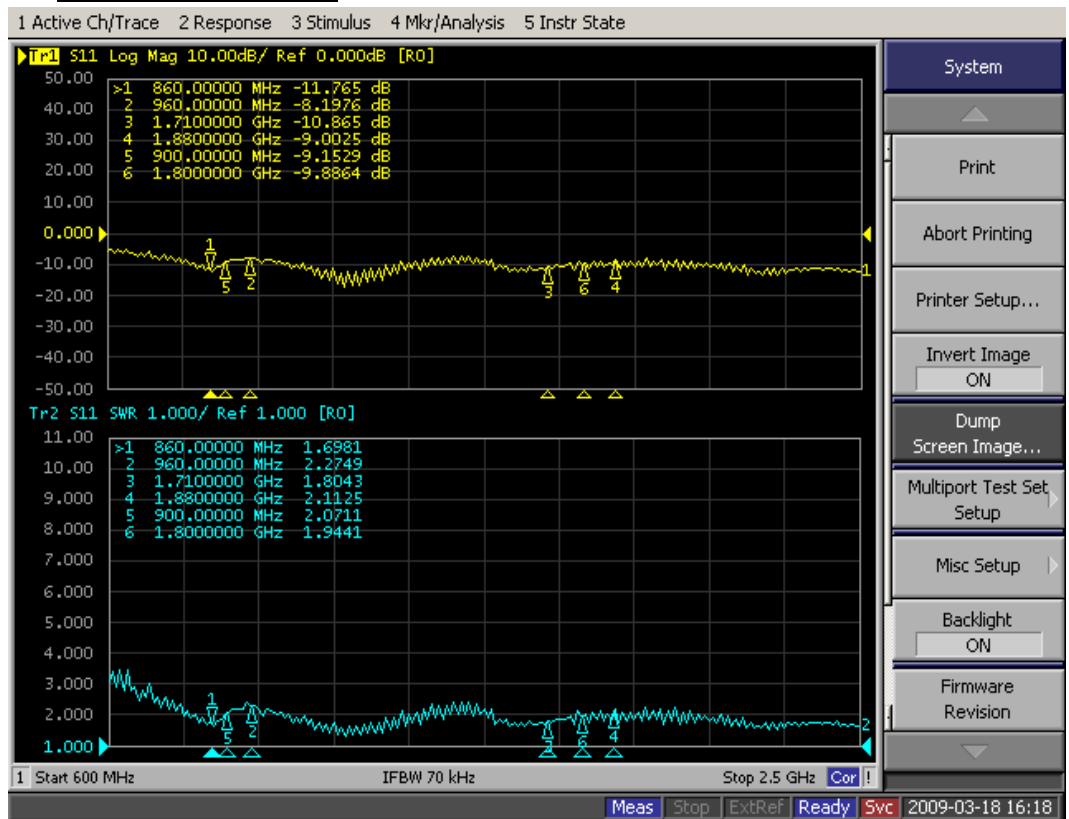
TEKFUN Tekfun Co., Ltd.

7. Drawing





8. TESTING REPORT



Tekfun Co., Ltd.

