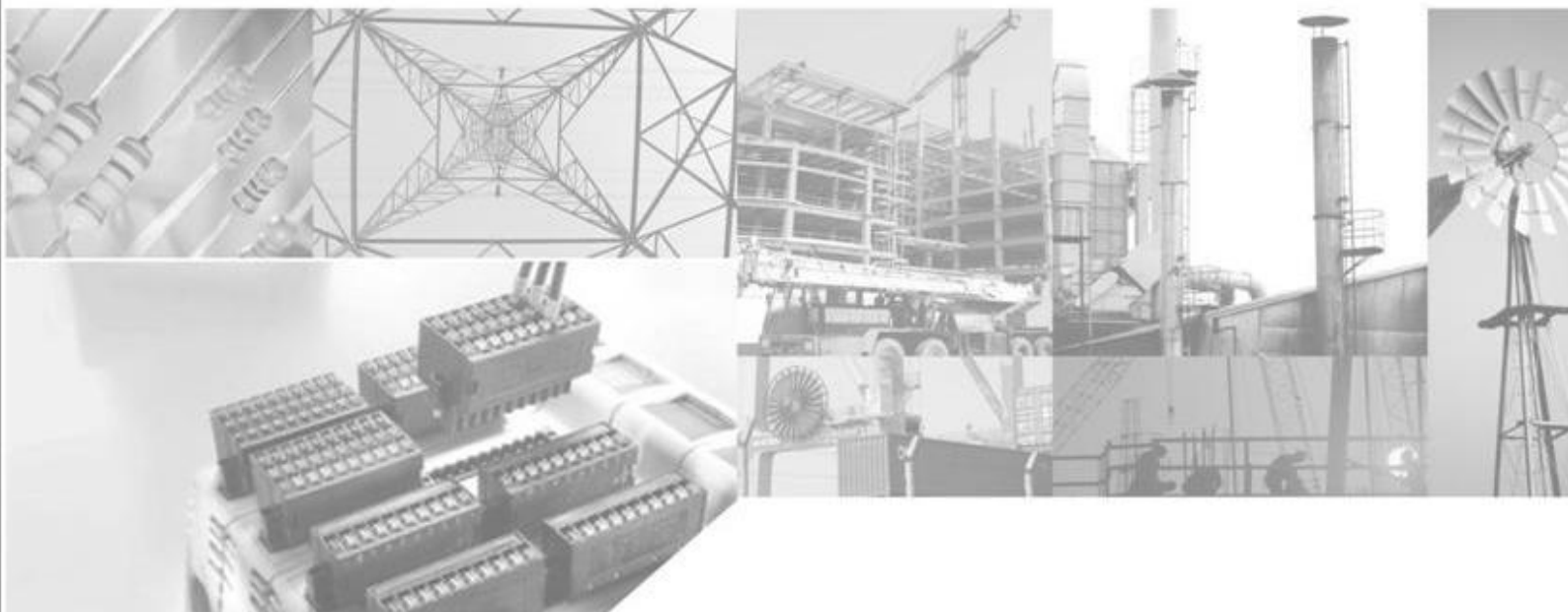


Neoway Technology Co., Ltd

Technical Document

Neo_WM620 Firmware Upgrade Guide

V1.0



有无线 方精彩
LET'S ENJOY WIRELESS LIFE

Copyright © Neoway Technology Co., Ltd 2014. All rights reserved.

No part of this document may be reproduced or transmitted in any form or by any means without prior written consent of Neoway Technology Co., Ltd.

Neoway[®] is the trademark of Neoway Technology Co., Ltd.

All other trademarks and trade names mentioned in this document are the property of their respective holders.

Notice

This document is intended for [system engineers \(SEs\)](#), [development engineers](#), and [test engineers](#).

The information in this document is subject to change without notice due to product version update or other reasons.

Every effort has been made in preparation of this document to ensure accuracy of the contents, but all statements, information, and recommendations in this document do not constitute a warranty of any kind, express or implied.

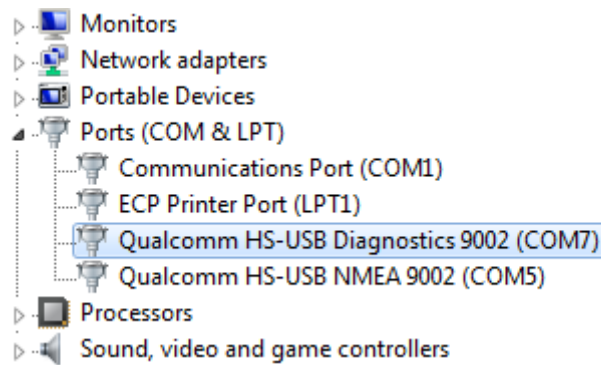
Neoway provides customers complete technical support. If you have any question, please contact your account manager or email to the following email addresses:

Sales@neoway.com.cn

Support@neoway.com.cn

Website: <http://www.neoway.com.cn>

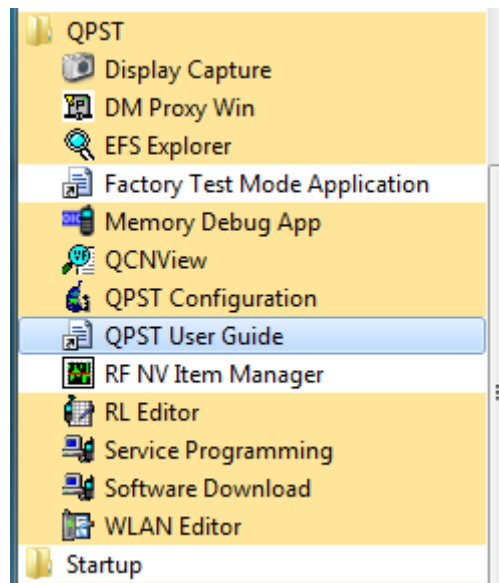
1 Confirm the COM port number



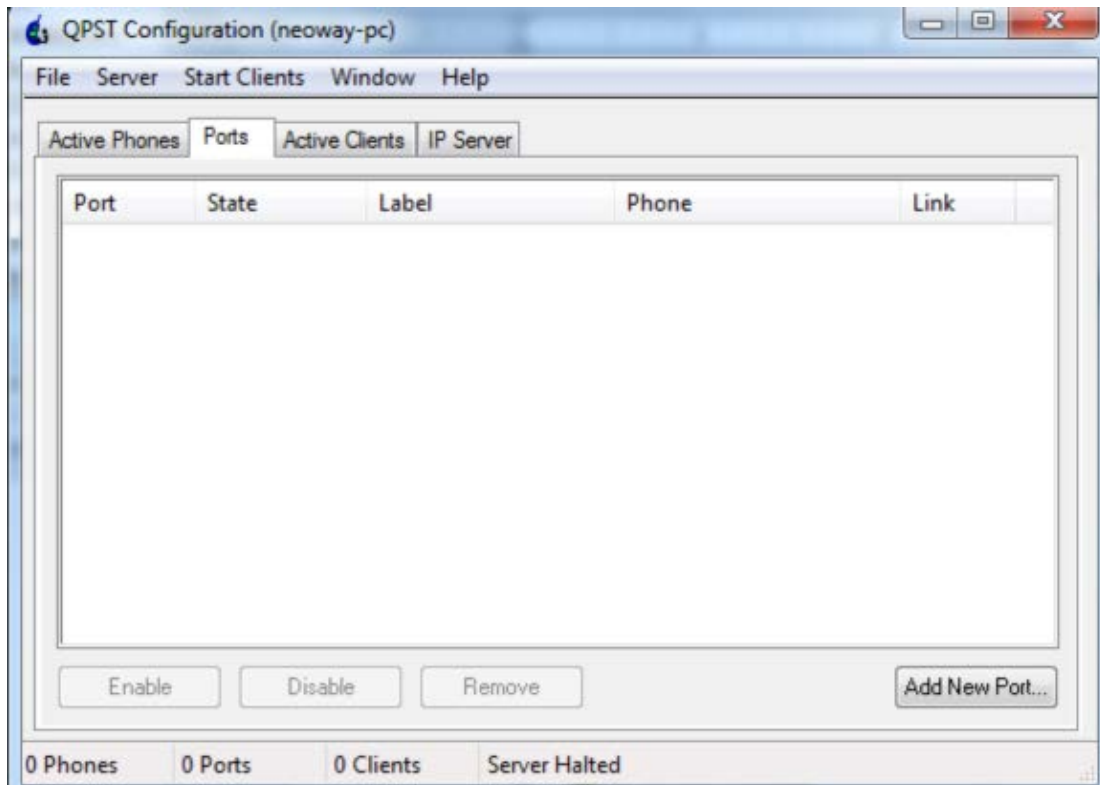
2 Install the QPST upgrade tool

3 Add the upgrade port

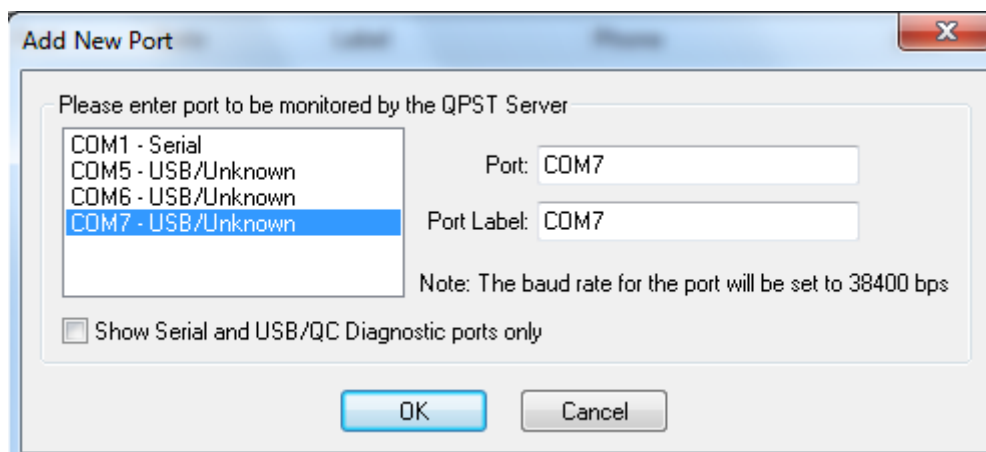
Step 1 Click Start and choose **All Programs > QPST > QPST Configuration**.



Step 2 In the **QPST Configuration** window, click **Add New Port** on the **Ports** tab.



Step 3 In the **Add New Port** dialog box, select the COM port confirmed in chapter 1 and click **OK**.



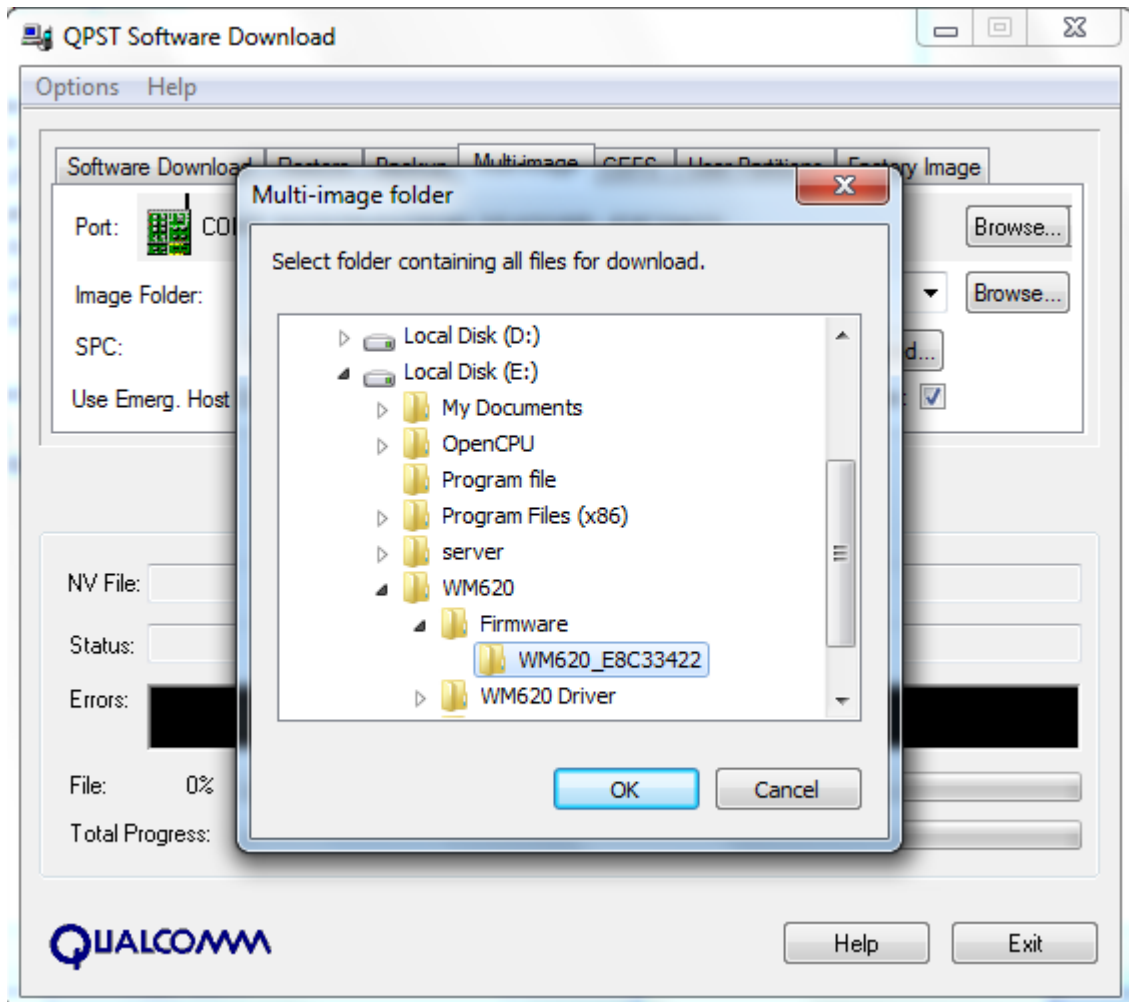
4 Start upgrade

Step 1 Click **Start** and choose **All Programs > QPST > Software Download**.

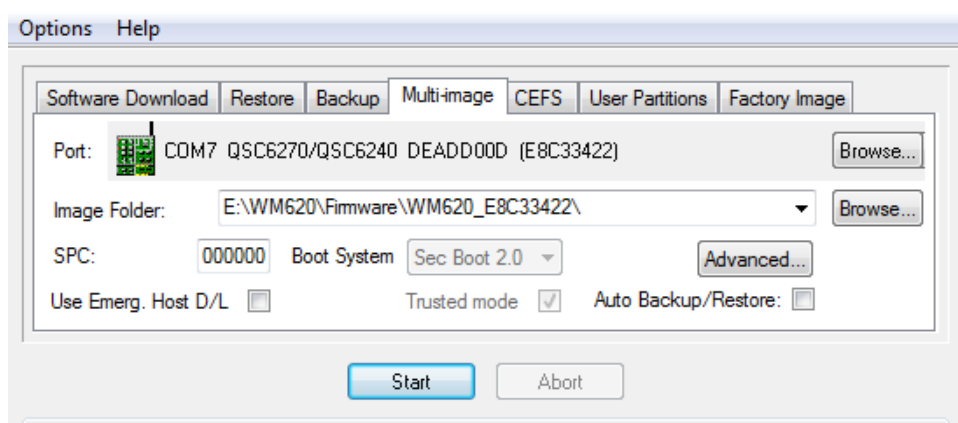
Step 2 In the **QPST Software Download** dialog box, click the **Multi-image** tab.

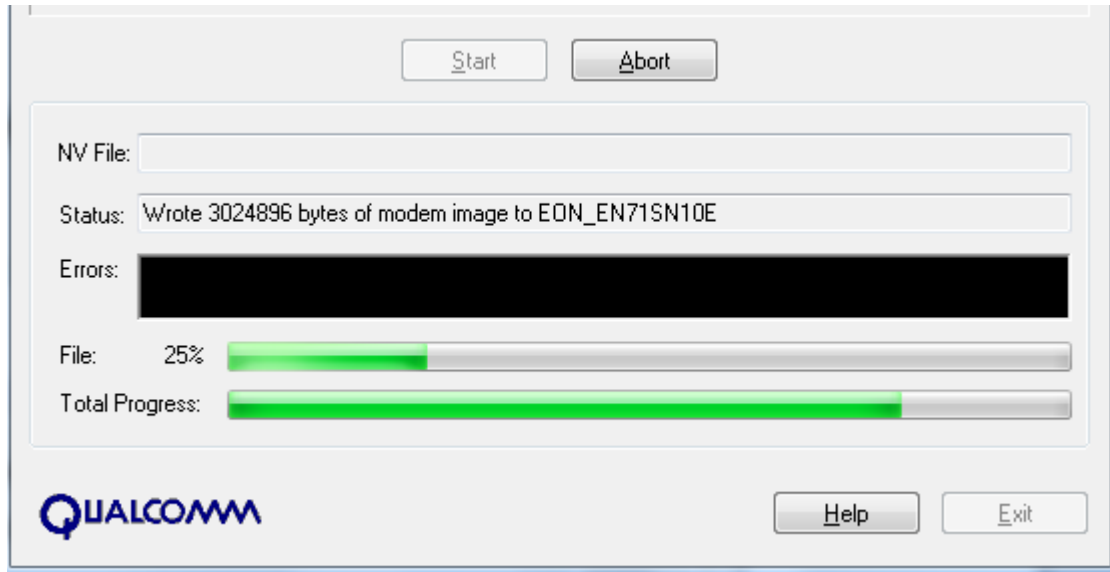
Step 3 Select the Port.

Step 4 Choose the upgrade file and click **OK**.



Step 5 Clear **Auto Backup/Restore** check box and click **Start**.





After upgrade is completed successfully, the following window is displayed.

