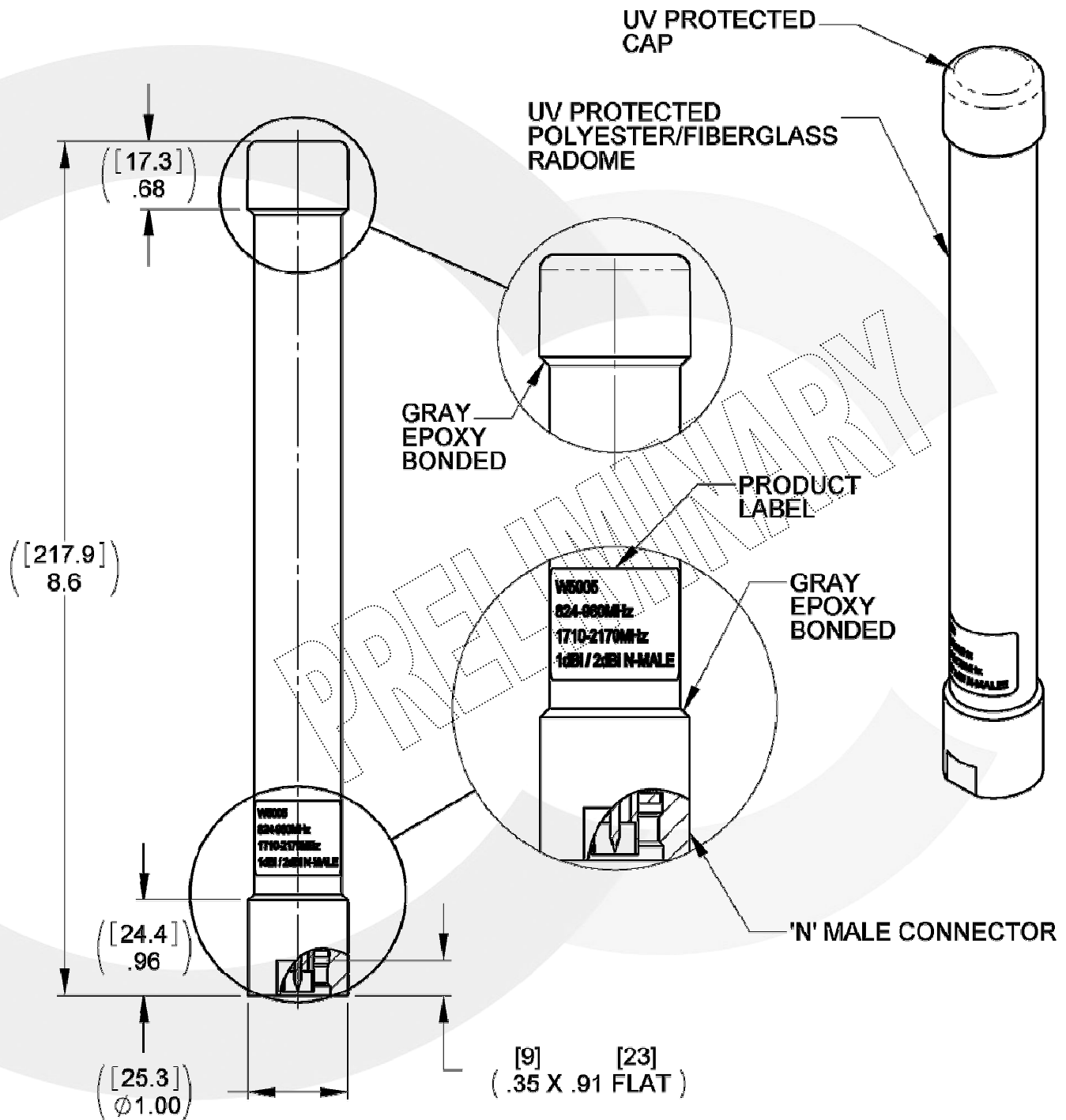


**PENTABAND RADOME OMNI, N CONNECTOR**

**W5005**

824-960/1710-2170 MHz

Series : ANTENNA



All dimensions are inches [mm]

Issue : 0951

In the effort to improve our products, we reserve the right to make changes judged to be necessary.



**PENTABAND RADOME OMNI, N CONNECTOR****W5005****824-960/1710-2170 MHz**Series : **ANTENNA****ELECTRICAL SPECIFICATIONS**

Frequency : .....	<b>824-960/1710-2170 MHz</b>
Nominal Impedance : .....	<b>50 Ω</b>
VSWR : .....	<b>2.5:1 Max</b>
Gain (824-960) : .....	<b>1.0 dBi avg</b>
Gain (1710-2170) : .....	<b>2.0 dBi avg</b>
Radiation Pattern	
-3 dB beamwidth	
Horizontal Plane :	<b>OMNI</b>
Vertical Plane :	<b>60° avg</b>
Polarization : .....	<b>Vertical</b>
Power withstanding : .....	<b>20 W</b>
Connector type : .....	<b>N Male</b>

**MECHANICAL SPECIFICATIONS**

Radome : .....	<b>POLYESTER/FIBERGLASS</b>
Plastic cap : .....	<b>Acrylonitrile Styrene Acrylate (ASA)</b> <b>UL File-N°. E41871 (UL 94 – HB)</b>
Ingress protection : .....	<b>IP 67</b>
Color : .....	<b>White</b>
Weight : .....	<b>156 g</b>
Wind-loading : .....	<b>150 Mph</b>
Side-loading @ 1ft : .....	<b>40 Lbs</b>
Overall length : .....	<b>8.6 INCHES</b>

**ENVIRONMENTAL SPECIFICATIONS**

Operating temperature : .....	<b>-40 to +85 ° C</b>
Storage temperature : .....	<b>-40 to +85 ° C</b>

Issue : **0951**

In the effort to improve our products, we reserve the right to make changes judged to be necessary.



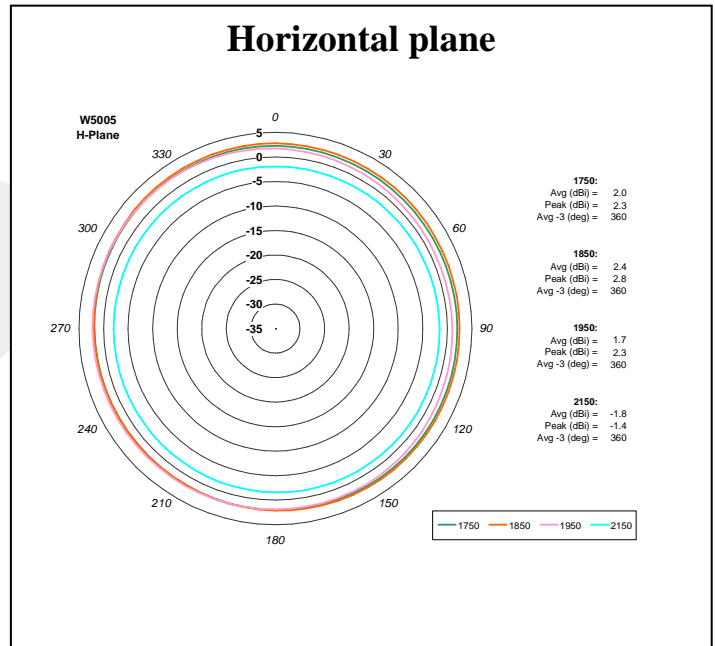
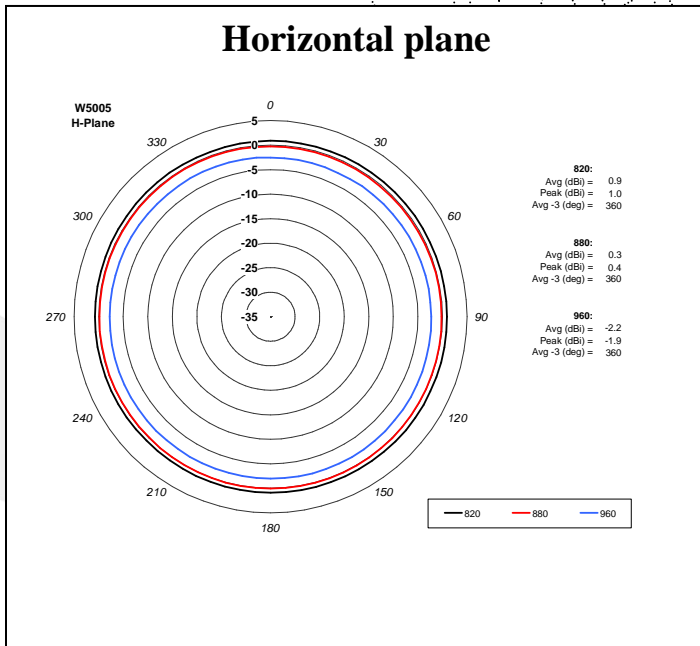
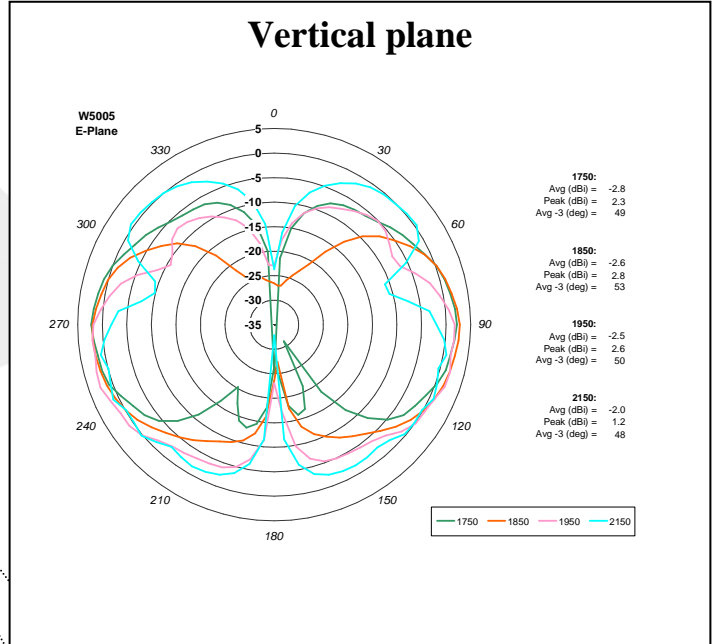
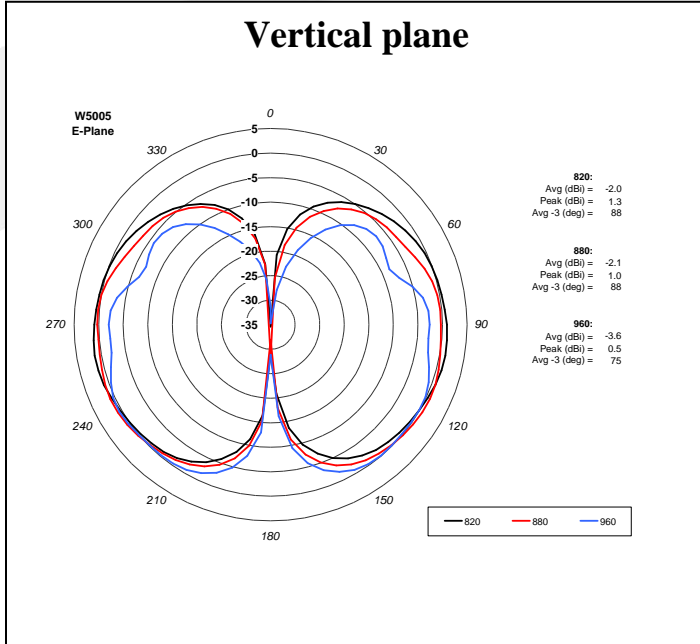
**PENTABAND RADOME OMNI, N CONNECTOR**

**W5005**

**824-960/1710-2170 MHz**

Series : ANTENNA

**CURVES**



Issue : 0951

In the effort to improve our products, we reserve the right to make changes judged to be necessary.



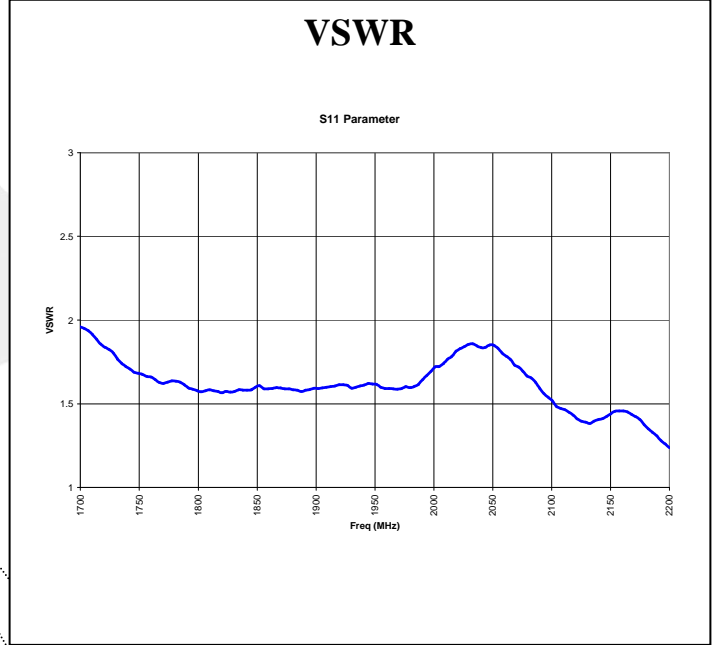
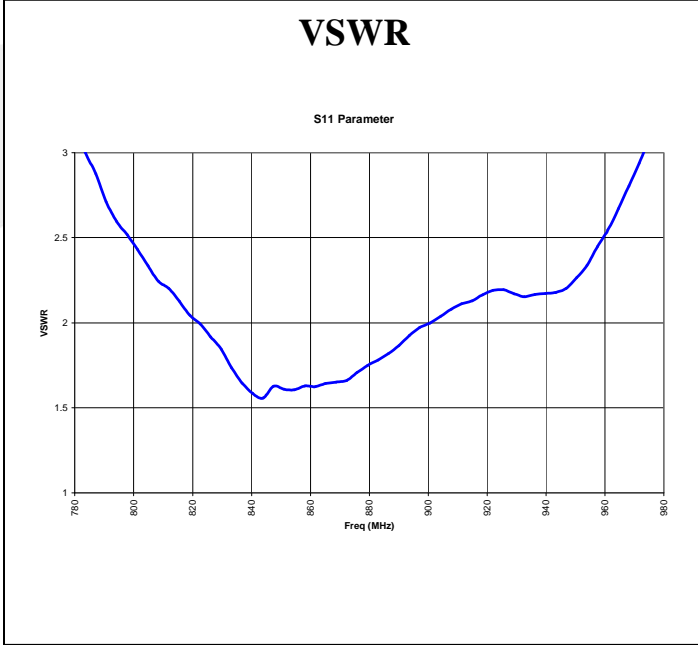
**PENTABAND RADOME OMNI, N CONNECTOR**

**W5005**

**824-960/1710-2170 MHz**

Series : ANTENNA

**CURVES**



PRELIMINARY

**Issue : 0951**

In the effort to improve our products, we reserve the right to make changes judged to be necessary.

